



LexisNexis Academic

Accessing the Database

Go to the Library Homepage css.edu/Library


Select *Databases, A to Z* from the *Popular Links* column on the left or click on the *Articles* tab at the top.

Library of The College of St. Scholastica: Home

Welcome to the CSS Library. Please contact us if you need assistance.

- Home
- Getting Started
- Encyclopedias
- Books
- Articles
- Citation Help
- Archives


Popular Links




Old Sol might be down to his last 4 billion years but SOLAR will just keep serving your needs. It's like Google, only better.

- SOLAR
- ScholastiCAT
- Databases, A to Z
- Academic Search Premier
- LibGuides
- Interlibrary Loan
- Reserves
- Distance Students
- Tutorials for Library Resources
- Duluth News-Tribune
- Faculty Resources
- Friends of the Library
- Popular Reading

Ms. Dugan reads what?



Our *Faculty Read What?* series returns for December. This month we feature Ms. Anne Dugan, an art historian and adjunct instructor in our Art Department where she teaches modern art history. Ms. Dugan is a former director of the Duluth Art Institute, and the coordinator for the annual Free Range Film Festival near Wrenshall. (Yes, the one with screenings in the barn!)



Leap by Terry Tempest Williams
Williams goes on a 7-year spiritual spin out after seeing Hieronymus Bosch's painting "The Garden of Earthly Delights". She treats the painting as an unraveling tapestry – pulling on threads of science, psychology, and cosmic truth. My mother-in-law gave me this book when I got done with graduate school and it was so refreshing to read such a

Contact Us

The College of St. Scholastica Library
1200 Kenwood Avenue
Duluth, MN 55811

- Phone: 218.723-6140
- Fax: 218.723.6948
- Text: 218.422.6942
- Email
- AskUs@CSS
- Library Directory
- Like us on Facebook
- Follow us on Twitter
- About us

Library hours

Regular hours

Exams & Holidays

Fall & Spring semesters

Once on Articles page, select the database you are interested either by finding it in the *Best Bets* box or else by clicking on the *Databases, A to Z* link for an alphabetical listing of all the databases the Library subscribes to. If you are on campus, you will not need a password. Look at the other tabs and boxes for more help with finding the full-text of articles, tutorials, and more.

Library of The College of St. Scholastica: ARTICLES

Welcome to the CSS Library. Please contact us if you need assistance.

If you are off campus, when you click on the title of the database, this window will automatically pop up:

Database Access via The College of St. Scholastica Library

Please enter your username:

Please enter your password:

Your network login is active as long as you are a registered student, faculty or staff member of The College of St. Scholastica.

Enter your Novell username and password (what you use to log in to Blackboard, COR, your CSS email, or any computer in a lab on campus).

****Note:** If you have trouble logging in, please call the IT help desk (Toll free 1-877-723-5911).

Searching

Main Search Screen - defaults to a basic search where you can type in your search terms. View the video tutorials linked in the left-hand column for more help.

LexisNexis® Academic

Academic Search

Search by Subject or Topic ▾

Enter Search Terms Search

Advanced Options ▾

Training for LN Academic is available. To view and sign up for a webinar, visit our training resources page.

Hot Topics Links Today's Front Page News

European Migrant Crisis	Paris Terror Attacks	2016 Presidential Election
Syria	Pope Francis	Cuba
Nobel Prize	Afghanistan	College Basketball

Search the News ▾ U.S. and World News.

Look up a Legal Case ▾ Federal and state cases.

Get Company Info ▾ Over 80 million companies.

Advanced Search - Click on the *Advanced Options*

The advanced search allows you to specify a date range, select a source in which you would like to find articles such as different content types like newspapers or company profiles, and build your own segment search using Boolean logic terms such as *And*, *Or*, or *And Not*. Click the red *Apply* button when you have your search ready.

Advanced Options ▶

Date
From
to

Build Your Own Segment Search ?

Select a Segment ▾ **And** **Or** **And Not** **w/5** **w/p**

Useful when you need to narrow your search to something specific, like a legal citation, an author's name, or a word in the headline. For example: HEADLINE(Congress w/5 budget)

Source
 Select Source by Type (below) or Enter Source Name Here

Index Terms
[Look up Index Terms](#)

Content Type
 Select All

<input checked="" type="checkbox"/> N Newspapers	<input checked="" type="checkbox"/> L Law Reviews
<input checked="" type="checkbox"/> S State and Federal Cases	<input checked="" type="checkbox"/> C Company Profiles

Apply **Cancel**

Subject or Topic – click on *Search by Subject or Topic* to have more options for limiting where you are searching. Click on any of these links to just search that section of the database such as news, legal information or company profiles.

News	
All News	Foreign Language News
Broadcast Transcripts	
Legal	
Federal and State Cases	Federal Statutes and Regulations
Law Reviews	Legal Reference
State Statutes and Regulations	Patent Search
Shepard's® Citations	
International Legal	
Canadian Cases	EU, Commonwealth, and Other Nations
Canadian Legislation	
Companies	
Dossier(Company, Executive, & Industry)	Company Profiles
SEC Filings	
People, Places and Things	
Biographical Information	Country Information
Consumer Information	
Smart Phone Interface	

Results List

Results Screen - you will see a list of citations. Click on the article's title to view the article.

In the left-hand margin you have some options for narrowing your search to certain types of sources like newspapers, subject, industry, company, geography, etc.

Mark the articles you are interested in by clicking on the box in front of its number. You can print, email, save, export, or send them to the cloud by clicking on those buttons on the right-hand side.

Show Search within results
 Sort 1-25 of 993
 View tagged Duplicate Options Off
 Select Language Disclaimer Powered by Google Translate
Results
 1. [Energy company faces ASC charges](#)
 The Calgary Herald (Alberta), March 19, 2013 Tuesday, CALGARY BUSINESS; Pg. D3, 368 words, Dan Healing, Calgary Herald
 2. [Say slow the new 'say no'; Canadian companies may adopt new tactic to fend off hostile takeovers](#)
 The Calgary Herald (Alberta), January 10, 2013 Thursday, CALGARY BUSINESS; Pg. E6, 762 words, Drew Hasselback, Financial Post

Exporting Citations to EndNote

(see [instructions for EndNote](#) for information on how to use this program)

Add articles you want to export by click on the boxes in front of their title.

Then click on the book icon in the upper right hand corner of the screen.



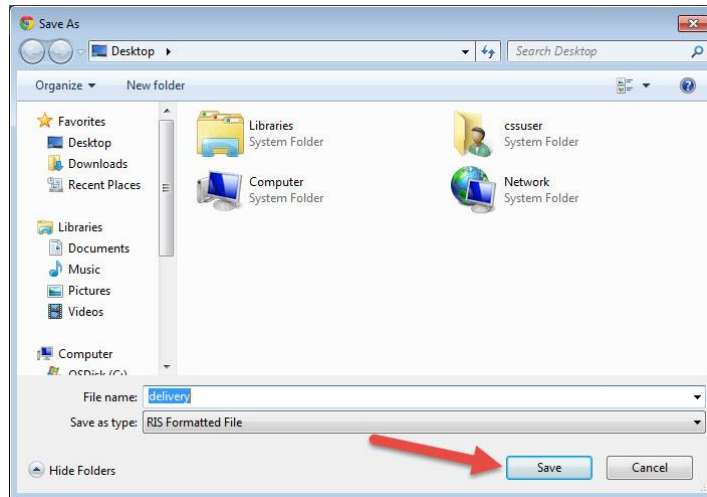
Click on the circle in front of *Download Bibliographic Data for other generators, e. g. EndNote*, select which citation style you need from the pull-down menu to the right, and then click on *Export*.

A screenshot of a web browser window titled "LexisNexis® Academic: Export Bibliographic References - Google Chrome". The address bar shows "www.lexisnexis.com/lnacui2api/results/listview/delPrep.do?cisb=22_T2013379712". The page content includes:

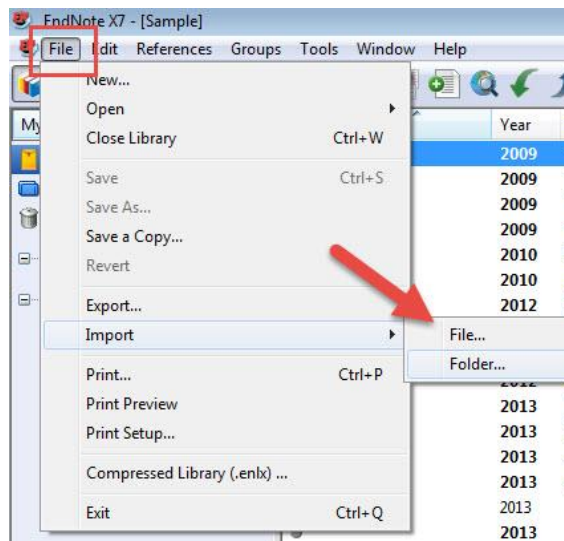
- Export Bibliographic References** header
- Source:** Company Profiles and Directories;US Law Reviews and Journals, Combined;Federal Court Case...
- Terms:** (target company)
- Document Range:**
 - A maximum of 250 documents can be exported at a time
 - All Documents (1 - 993)
 - Tagged Documents (2)
 - Select Items e.g., 1,3-5,9
- Export Type:**
 - Export using RefWorks
 - Download Bibliographic Data for other generators, e.g. EndNote
 - Display Bibliographic Information in a new window
- Style:** MLA
- Export** button

At the bottom, there is a note: "Export of RefWorks format will be redirected to the RefWorks login center. Export delivery is subject to [Terms & Conditions](#) . Please review them." Two red arrows point from the right towards the "Download Bibliographic Data for other generators, e.g. EndNote" option and the "Export" button.

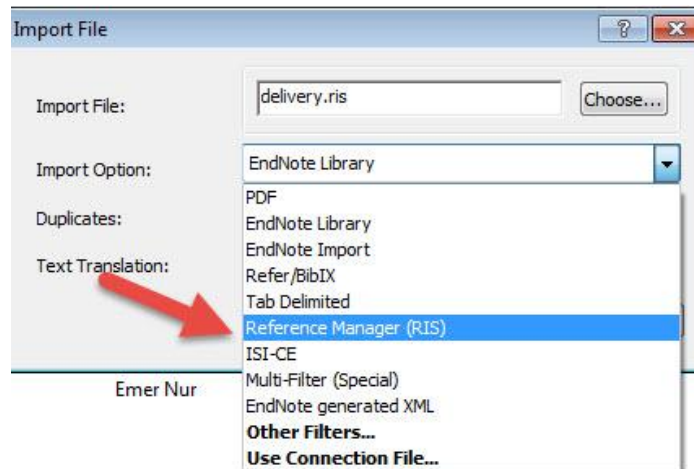
Click on *Save* where you wish the file to be saved.



Open the EndNote library you wish to add the citation to and in the *File* tool bar option, select *Import and File...*



Select the *Import Option* and click on *Reference Manager (RIS)*.



Click on *Choose...* to select the file you just saved and click on *Open*.



Your citations will now automatically be added to your EndNote library.